



THE MONIER BALINESE LOOK:

Flipping homes to add value

Jenny Trafford certainly knows about building new houses – and where to add value. A serial home flipper, Jenny has built and sold 15 homes over the last 30 years.

/////////
/////////

Style
Strength
Colour

Flipping homes: how to add value

Jenny Trafford certainly knows about building new houses as a serial home flipper, who has built and sold 15 homes over the last 30 years.

Each time she builds, she's learnt a bit more, perfected the design further and increased the home's size. Her latest house is the first time she's used roof tiles on this particular design.

"It's one of the nicest homes I've ever built," she says. "The tiles make it look classier and create such striking lines that the roof becomes the feature."

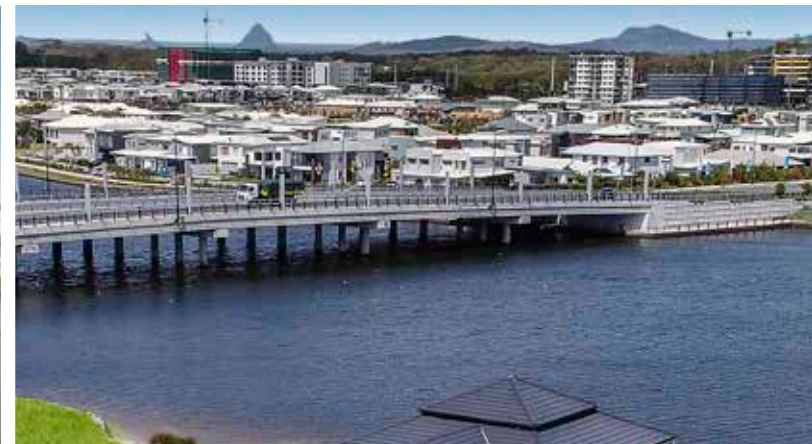
As a successful small-time property developer, Jenny says there are two big factors she considers when building a new property – location and street appeal.

"I do extensive location research on what's sold recently and what's going to happen in the next five years," she says.

Secondly, she makes sure any build has strong street appeal, which is why she's loving the look of tiles. The fact that, unlike metal, they won't rust or corrode in the waterside location also made them a smart choice.

The house took 11 months to build and is located in Bokharina, a new island development on Queensland's Sunshine Coast. It was designed by Jenny and has a tropical, Balinese feel similar to the holiday vibe of the area.

She chose the Madison concrete roof tile, which has a flat, modern profile. Madison features a centre shadow line that enhances its aesthetic appeal, creating a minimalist, very stylish and exclusive look.



Concrete tiles get stronger as they age, and the rich dark Soho Night shade Jenny selected has been treated with Monier's new C-LOC™ technology, which is independently tested* to perform 8 times better in gloss retention than standard Colorbond™ metal, meaning your home looks better for longer.

Although this home was set to be the forever home, Jenny's often ended up selling because "someone's knocked on the door and offered a good price".

If she builds another home, she says the roof will be tiled as well. Jenny says she's not going back to metal.



TO READ THE FULL
STORY VISIT
monier.com.au



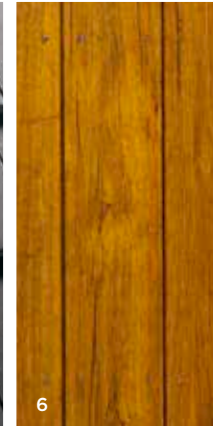
"It's one of the nicest homes I've ever built. The tiles make it look classier and create such striking lines that the roof becomes the feature."

SERIAL HOME FLIPPER
JENNY TRAFFORD

THE MONIER BALINESE LOOK

Flipping homes to add value

- 1 Square-shaped, high-pitch roof over pavilion-styled buildings with Monier's A-Line Ridging
- 2 Palm trees scattered throughout the garden
- 3 Landscape using gravel pathways and plant beds, for a relaxed-low-maintenance look
- 4 This statue was sourced by Jenny in Bali, for similar, see www.baligarden.com/shop
- 5 Flatter, contemporary profile tiles such as the stylish Madison, here in Soho Night
- 6 Complement the streamlined roof with rich red-stained timber trims



DULUX
White Dune
Half

DULUX
Monument

THE MONIER BALINESE LOOK
Flipping homes to add value

Select your tile

Good

CONCRETE MADISON

 C-LOC™ COLOUR LOCK TECHNOLOGY

Jenny chose Madison from our designer tile range, because of the thin streamlined look designed to reflect the look of shingle. An added benefit for her was that it comes standard with C-LOC™; Monier's latest innovation that has been proven to perform 8 times better than standard metal.



● Soho Night

Finish Matte

Roof Pitch Minimum 15°

Ridging A-line

Better

TERRACOTTA NULLARBOR

 COLOUR THAT NEVER FADES

If you love the streamline shingle look, but want the benefit of your colour never changing - you can't go past Terracotta Nullabor. With a flat streamlined look, it is made in Australia from natural clay and fired at high temperatures to lock the colour in. That's why it comes with a 50 year colour guarantee.



- Titan
- Peak
- Comet
- Bedrock

Finish Matte

Roof Pitch Minimum 25°

Ridging A-line

“Street appeal is one of the strongest selling points of your house, make sure you spend time to get this right.”

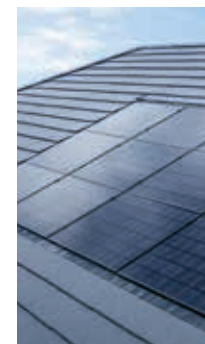
DESIGN TIP

Best

InlineSOLAR

 THE POWER OF A GREAT LOOKING ROOF

If your house gets loads of sunlight, consider Monier's latest innovation in SOLARroofing. InlineSOLAR sits within the roofline of your home, so you get all the benefits of solar without affecting the street appeal of your home.



Integrated design

Structural integrity

Australia's gold standard

Battery compatible

TO SEE MORE TILE STYLES VISIT monier.com.au OR CALL 1800 666 437   


MONIER™